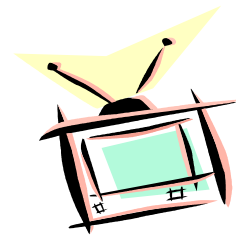


Time and Temperature



1. (a) What is your favourite TV programme?
 (b) Write down the start time in 12 hour notation.
 (c) Write down the start time in 24 hour notation.

2. Write these times in 12 hour notation.



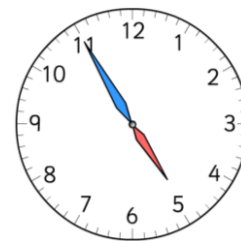
Morning



Afternoon



Night



Evening

3. Write out your day with times.

Activity	Time
Get up	
Breakfast	
Go to school	
Watch tv	

4. Copy and complete the table, fill in the time that has elapsed.

Time 1	Time 2	Elapsed Time
10.00 a.m.	12.00 p.m.	
6.30 a.m.	10.30 am	
8.15 a.m.	1.15 p.m.	
1535	2235	
1310	1920	
0910	2300	
2300	0415	
10.30 p.m.	3.15 a.m.	
7.40 p.m.	7.35 am	
2130	7.40 a.m.	

5. The programme for the school summer concert is as follows;

Pitlochry High's Summer Concert	
<u>Performance</u>	<u>Time on Stage</u>
Orchestra	15 minutes
Band	15 minutes
Interval	10 minutes
Choir	15 minutes
Head Teacher's Speech	20 minutes



- If the concert starts at 7:30pm, what time will it finish at?
- If the concert must be finish at 2100, what time would it need to start at?

6. Martin lives a 10 minute walk from the bus stop.
It takes him 40 minutes on the bus to get to work.
He lives a 25 minute walk from the train station;
it takes 20 minutes on the train to work.

- How long will it take Martin to get to work on the bus?
- How long will it take Martin to get to work on the Train?
- Which method of transport is the quickest?
- Give a reason why he might get the bus instead of the train.



7. You have arranged to meet your aunt at 1pm in George Square, Glasgow.

- How are you going to travel?
- How long will the journey take you?
- What time will you need to leave your home at?



8. Claire decided to make Sunday dinner for her family.
Below is the list of food with cooking times.

Food	Cooking Time
Turkey	3 $\frac{1}{2}$ hours
Potatoes	30 minutes
Corn	7 minutes
Gravy	15 minutes

If dinner is to be served at 2:15pm,
should Claire start to make;

- The potatoes?
- The corn?
- The gravy?
- If she starts making the Turkey at 11am, will it be ready on time?



9. Copy and complete the table.

	Seconds	Minutes
(a)	60	
(b)		2
(c)		3
(d)	90	
(e)		10

10. Copy and complete the table.

	Minutes	Hours
(a)		1
(b)		2
(c)	180	
(d)	30	
(e)		0.1
(f)	12	



11. Copy and complete the table.

	Hours	Hours & min
(a)		2h 30mins
(b)	1.5	
(c)	1.25	
(d)	$1\frac{1}{3}$	
(e)		3h 45mins

12. (a) Write each speed (giving your answers in miles per hour).

(i)



(ii)



(iii)



13. Calculate the distance travelled by each of the following people if they travel at the speeds shown above. (Remember to show necessary working)

Name	Time	(i)	(ii)	(iii)
Mike	3 hours	300 miles		
Sajid	$\frac{1}{2}$ hour			
Terry	2.5 hours			
Mary	4 hours 15 minutes			
Zoe	1.25 hours			
Courtney	3 hours 45 minutes			

14. (a) If it takes Natalie 3 minutes to reach her aunt's house 600 meters away, What speed was she travelling at?
- (b) How fast was Andrew travelling if it took him 5 hours to travel 2000 miles? By which mode of transport do you think he was travelling?
- (c) It takes Tom 40 minutes to travel the 15 miles to work. What speed is he travelling at? (Give your answer in miles per hour)

15. (a) How many days in:

- (i) March
(ii) November
(iii) August



- (b) Copy and complete the Calendar for a leap year and use it to answer these questions:

- (i) What day will 15th Feb be?
(ii) What date is one week after the 9th Feb?
(iii) What date is 2 weeks before the 28th Feb?

February						
Mon	Tue	Wed	Thu	Fri	Sat	Sun
	1	2	3			



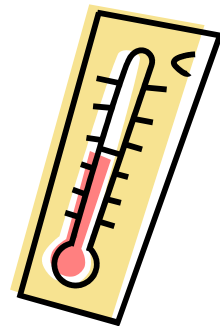
16. Calculate the time taken when;

- (a) Louise walks for 4 miles at 2miles per hour.
(b) Liam cycles twenty miles at five miles per hour.
(c) Jack runs 26km at a speed of 4 km/h.
(d) Katie drives 105 miles at 10mph.

17. Solve these problems.

- (a) Kevin walking 4.5km at 1.5 km per hour.
(b) Leanne driving 2.2miles in 15 minutes
(c) Patricia cycling 40miles in 6 hours.

18. The temperature in London at 2pm was 16°C but at 2am it had dropped to -4°C . What was the difference in temperature over the 12 hours?
19. Find the difference in temperature between Glasgow at 2°C and Edinburgh at -5°C .
20. The temperature in London at 2pm was 23°C but at 2am it had dropped to -9°C . What was the difference in temperature over the 12 hours?
21. Find the difference in temperature between Glasgow at 8°C and Edinburgh at -3°C .
22. The temperature at 5am is -2°C .
- (a) At 7am the temperature rises by 3°C
 - (b) At 11am the temperature rises by a further 4°C .
 - (c) At 4pm the temperature falls by 2°C
 - (d) At midnight the temperature falls by a further 8°C .



Write down the temperature for each time of the day.